

FREEDOM WITH
COMFORT
LIKE AT HOME



MADE IN
GERMANY

SCHAEER Top class heating systems



Top class heating systems

The company

SCHEER, headquartered in Schleswig-Holstein (Germany), has been an innovative manufacturer of heating technology since 1953 and is widely known beyond the borders of Germany for its blue flame burner technology.

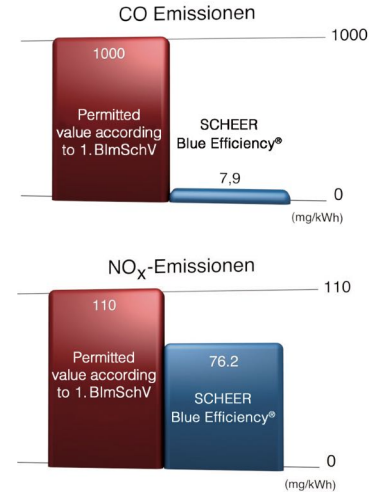
SCHEER has always embraced the challenge of developing increasingly energy-efficient and environmentally friendly processes and products while continuously improving the comfort of heat generation.

Best environmental values

Optimal fuel combustion is indispensable for this.

Our heating appliances for mobile use, equipped with our **Blue Efficiency®** burner, surpass the significantly strict TÜV guidelines for home installations by far.

The automatic altitude adjustment ensures optimal functioning of the heating system in every region of the world.



70 YEARS

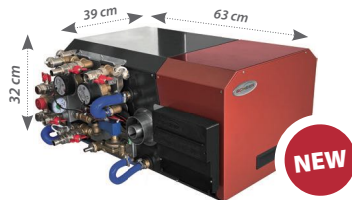
...my journey ...my SCHEER ...my coziness

- Environmentally friendly heating with liquid fuel
- On the road without sacrificing anything – shower comfortably like at home
- Warmth for your well-being

SCHEER

Heating Systems of the highest class

selection



1. Diesel heating device

The **Blue Efficiency**® burners by SCHEER can be operated with all conventional liquid fuels such as diesel, heating oil or gas oil. They are sustainably designed for alternative fuels such as GTL, thus prepared for the fuels of the future.

2. Blue flame Technology

In the mobile market, our blue flame technology **Blue Efficiency**® is unique, offering unmatched efficiency to date.

micro



3. 100 % Soot-Free

Thanks to the Blue Efficiency blue flame technology, the MH-series achieves complete combustion, making it 100% soot-free. This minimizes maintenance costs since the heating boiler remains clean without any soot.

nano



4. Efficiency of 94% with low fuel consumption

With sustainable **Blue Efficiency**® technology combined with soot-free combustion, the MH-series achieves a continuous efficiency of 94%, ensuring the efficiency of the heating Boiler permanently. This allows for a reduction in energy consumption of up to 30% and fuel savings of up to 15%.

5. Automatic Altitude Adjustment

The automatic altitude adjustment provides consistently high combustion quality automatically, ensuring the maintenance of high efficiency. Whether by the sea or in the mountains, the blue burner adjusts optimally and continuously to the conditions of altitude and oxygen content.

KBA



Produktseite



Water heating system

6. Heating with Hybrid Connection

The series is equipped with a 3kW electric hybrid connection. This allows heating your caravan without fossil combustion. Thus, you can ensure the Frost Protection of your system with electric power. This hybrid Solution is integrated on the boiler side. You have no additional Space requirement for this option.

7. Pleasant, quiet warmth

Our hot water heaters from SCHEER provide pleasant warmth and reliable comfort in your mobile home. The combination with underfloor heating or radiators ensures even and noiseless heat distribution, creating a cozy warm indoor climate.

8. Low exhaust temperatures

The heating systems in the MH-series have low exhaust temperatures. The heating energy remains within the system and is not lost through the exhaust system. The high efficiency ensures that the heat is optimally utilized.



HEATING IN EVERY HEIGHT

Water heating system selection



For tailored comfort

With its two staged blue flame burner, our new pressurized water heater selection ensures reliable and secure heat supply. The pre-assembled plug-in solution offers easy installation, including piping for radiators and underfloor heating, for immediate warmth in your mobile home.

New from October 2024

- » pressure-resistant stainless-steel boiler
 - » new design
 - » removable control unit
 - » even smaller dimensions
 - » 12/24 heating circuit pumps
- » two stage blue flame burner with 10/17 kW power
 - » pressurized, hot water producing heating system
 - » combination version for unlimited freshwater heating
 - » compact dimensions specifically for mobile applications
 - » blue flame technology Blue Efficiency with 1450 flame
 - » best environmental values
 - » hybrid heating with diesel/electric up to 3 kW

Water heating system nano



The smallest with a big impact

The new pressurized water heater nano from the MH-series has a heating capacity of 7kW. It is equipped with automatic altitude adjustment, ensuring optimal use at various altitudes.

Thanks to the innovative blue flame technology, the heater operates with exceptional efficiency and environmental friendliness. Additionally, it offers a hybrid function with up to 3 kW power via electricity, enhancing its versatility.

New from October 2024

- » 7 kW power
- » pressurized stainless steel boiler
- » Smallest dimensions
- » H/W/D: 32cm * 25 cm * 49cm
- » removable control unit
- » light weight of only 30kg
- » integrated hot water generation
- » Hybrid function diesel and electric with up to 3kW
- » individual room temperature controls via app (optional)
- » preheating of the engine section and use of engine heat possible (option)
- » proven for mobile use

Water heating system micro



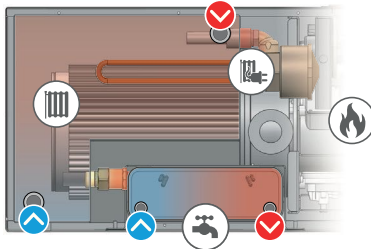
Water heater for your comfort, just like at home

Like all our water heaters, the micro is equipped with our **Blue Efficiency**[®] blue burner. Complete combustion ensures a permanently clean heating boiler without any soot.

The diesel heater has a power output of 10 kW.

The micro impresses with its compact dimensions (H: 30 cm, W: 46 cm, D: 60 cm) and a light weight of only 40 kg.

For unlimited showering, fresh water is heated via an integrated plate heat exchanger. You can choose how to provide your mobile home with soothing warmth. Whether with radiators, underfloor heating, or air heaters – everything is possible.



Shower comfort like at home. Don't miss out anything while vacation!

Technical Data

		selection	micro	nano
operating power	kW	10 / 17	10	7
dimensions (W / H / D)	cm	39 / 32 / 63	37 / 30 / 60	32 / 25 / 49
weight	kg	53	40	30
efficiency	%	94	94	94
boiler water content	l	17	17	8
nominal voltage burner	V	230	230	230
current consumption *	A	0,56	0,55	0,53



Soot-free and environment-friendly



operationally safe



Service-friendly and low maintenance



Suitable for extreme altitudes

* Assumption: 10 minutes burner operation per hour

Fuel: Diesel according to DIN EN 590, heating oil according to DIN 51603-1 well as e-fuels HVO, GTL or BTL according to DIN EN 15940

special equipmant

- preheating of the vehicle's engine and utilization of engine heat
- room thermostat with app connectivity
- tank level monitoring: timely shutdown when tank is empty

Your loyal companion



Experience the new control system for nano, micro and selection - the SCHEER HeatMate.

Enjoy the various connection options, the convenient operation of your heating system from the living room and the extensive functions that are available to you when traveling.

Extensive connectivity

The HeatMate is equipped with a CAN and Modbus connection as well as various potential-free control options. This means that your SCHEER heater can be quickly and easily integrated into the central control unit of your motorhome, giving you the possibility of equipping your mobile home the way you want it.

A silver motorhome is parked in a snowy landscape during sunset. The sky is a mix of orange, yellow, and grey, and the ground is covered in snow. The motorhome's interior lights are on, and its headlights are visible. A red banner is at the bottom of the image.

the new control system from SCHEER

SCHEER HeatMate

Comfortable Operation

The compact control panel of the HeatMate is your reliable companion on every journey. It can be conveniently operated from the living area, with the control unit placed anywhere you prefer. Additionally, you receive detailed information about the heater's status and can adjust and control it precisely according to your needs.

You decide at any time whether and how you want to heat. Choose between the diesel heater, the electric heater, or a hybrid mode to always make optimal use of available resources. And if you desire complete silence for a few hours at night, the night mode is available.

New from October 2024

- » new standardized control unit for nano, micro and selection
- » CAN and Modbus connection
- » convenient operating unit
- » intelligent energy saving
- » new night mode

Extensive Features

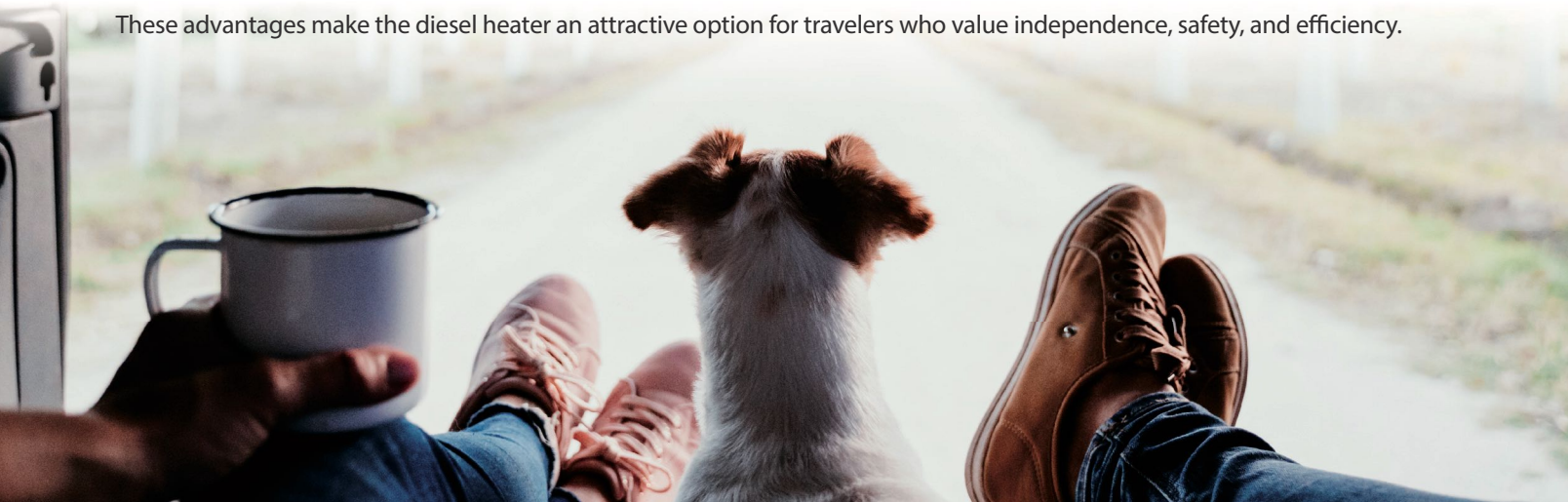
The HeatMate intelligently saves up to 25% of electrical energy. It activates your inverter precisely at the right time, eliminating unnecessary idle currents and ensuring more efficient power use.

Your advantages

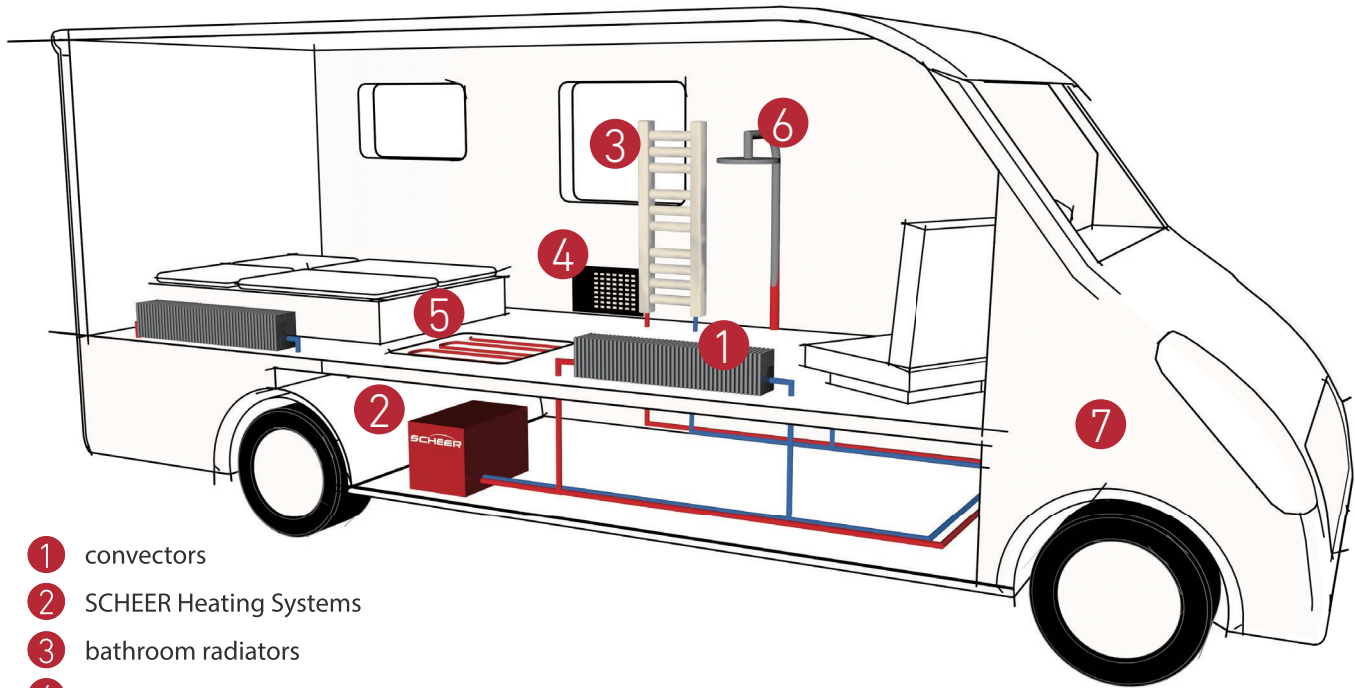
A diesel heater in a motorhome offers clear advantages over a gas heater:

- **Weight savings:** By eliminating gas cylinders, the overall weight of the motorhome is significantly reduced. Diesel heaters use the vehicle's existing fuel tank, so there is no need to carry additional gas cylinders.
- **Self-sufficient operation:** Diesel is almost universally available, making a diesel heater independent of regional regulations and the availability of gas.
- **Space savings:** The elimination of gas cylinders creates more storage space in the motorhome.
- **Safety aspect:** Diesel is less explosive than gas, which reduces safety risks.
- **Cost-effectiveness:** Since diesel heaters use the same fuel as the vehicle, you don't need to worry about refilling separate gas cylinders, which can save costs in the long run. Additionally, there is no risk of not finding a compatible gas cylinder abroad.

These advantages make the diesel heater an attractive option for travelers who value independence, safety, and efficiency.



Comfort without compromise



- ① convectors
- ② SCHEER Heating Systems
- ③ bathroom radiators
- ④ water-air heat exchangers
- ⑤ underfloor heating
- ⑥ hot water supply
- ⑦ engine heating / heating with engine heat

Water-air heat exchanger

Silencio 1



- quiet fan with low power consumption
- directly switchable even without fan controller
- equipped with a quiet, energy efficient fan

Silencio 2



Compact EVO 1 ED4



- central water-air heat exchanger
- ideal for warm air supply at multiple positions in the vehicle
- outlets can be easily mounted using the two side sliders on the heater with a clip securely holding them in place

description		Silencio 1	Silencio 2	Compact EVO 1
heating capacity	kW	1,7	5,5	4,3
air flow	m ³ /h	110	250	230
power consumption	W	7	16	70
noise level	dB	48	48	63
weight	kg	1	2	2,2
water connection	Ø mm	1/2"; 3/4"; Ø 16 mm, Ø 22 mm		

variants
voltage: 12 V / 24 V

room thermostat including WiFi and touch display



- The SCHEER room thermostat offers you the possibility to control radiators, underfloor heating or fan heaters.
- It has both manual and an automatic mode, where individual time programs can be set for weekdays, Saturday and Sunday.
- A temperature sensor is integrated into the device for room temperature detection. However, with the included external sensor, the temperature can also be detected up to 2.5m away.
- The thermostat can be operated via the touch display or a smartphone app. For this purpose, the thermostat can establish an internet connection via the existing Wi-Fi. This allows the room temperature to be accessed and adjusted remotely.

Water heating system MH-Series

SCHEER towel trail white/chrome

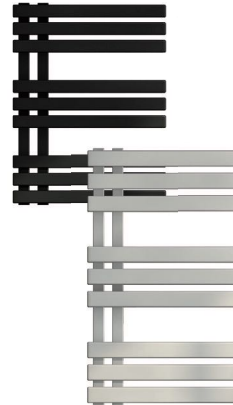


The SCHEER towel trail is specifically designed for the use in bathrooms.

With high heat output and particularly compact dimensions it is suitable for motorhomes, caravans and other compact spaces.

Additionally, the SCHEER towel trail is suitable for the use in both unpressurized and pressurized systems.

SCHEER Design Straight



The SCHEER Design Straight bathroom radiators are eye-catching in your bathroom.

The panel radiator gives your bathroom an elegant appearance with its matte finish.

Feel free to rotate this bathroom radiator by 180; due to the connection options at the top and bottom of the radiator, installation can be done in both directions.

convectors heaters made of copper and aluminum including brackets Ø 18 mm



Technical data

height including bracket: 78mm
Width including bracket: 35.56mm
Weight: 0.4 kg/m
Connection: 1/2"female thread

SCHEER convector heaters efficiently warm the air in the room. The curved fins ensure the best heat transfer. SCHEER convector heaters are suitable for use in both unpressurized and pressurized systems.



SCHEER Heizsysteme & Produktionstechnik GmbH

Chausseestraße 16

D-25797 Wöhrden

Tel. +49 (0) 48 39 905-0

E-Mail info@scheer-heizsysteme.de

Web www.scheer-heizsysteme.de



Visit us directly online.
simply scan the code with your handy.

Stand 09/2024